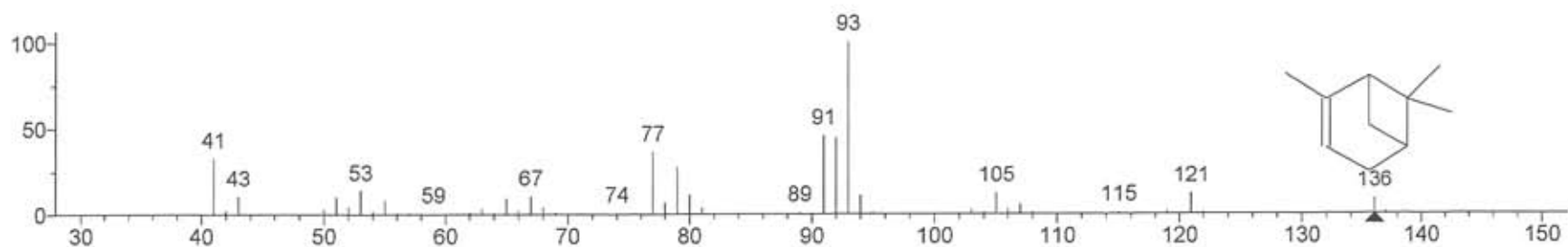
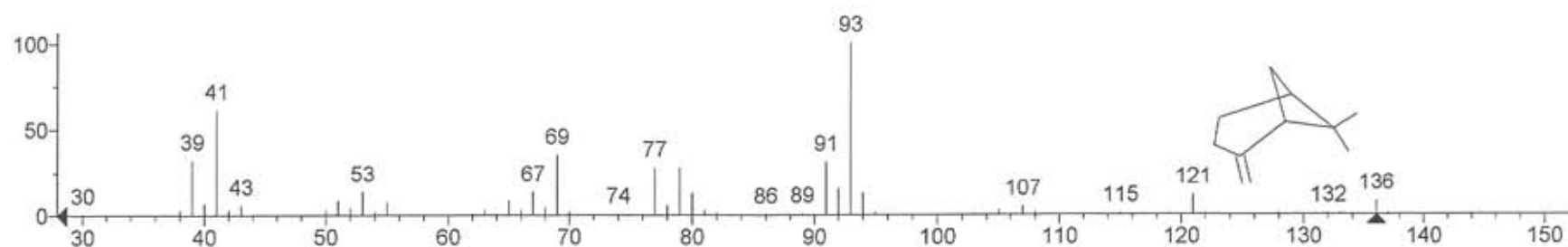


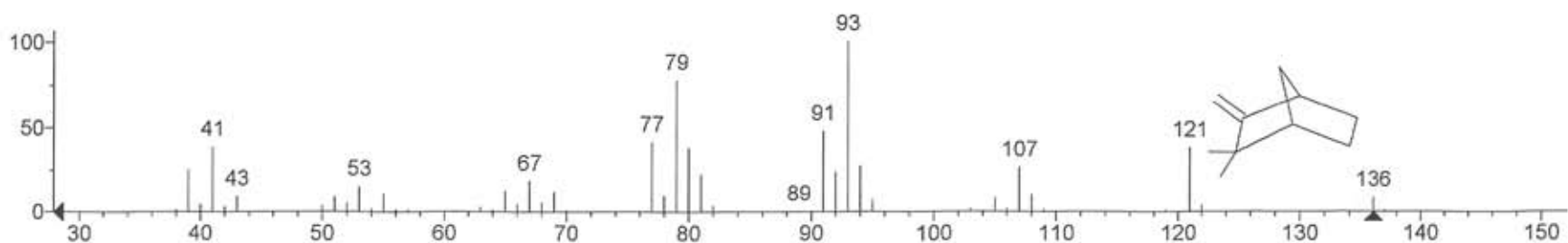
Hit 1 : 1R- α -Pinene
C₁₀H₁₆; MF: 956; RMF: 957; Prob 16.5%; CAS: 7785-70-8; Lib: replib; ID: 12053.



Hit 1 : β -Pinene
C₁₀H₁₆; MF: 934; RMF: 934; Prob 30.9%; CAS: 127-91-3; Lib: mainlib; ID: 51259.



Hit 2 : Bicyclo[2.2.1]heptane, 2,2-dimethyl-3-methylene-, (1R)-
C₁₀H₁₆; MF: 872; RMF: 875; Prob 9.85%; CAS: 5794-03-6; Lib: mainlib; ID: 51545.



Hit 1 : D-Limonene
C₁₀H₁₆; MF: 897; RMF: 899; Prob 22.6%; CAS: 5989-27-5; Lib: replib; ID: 7415.

