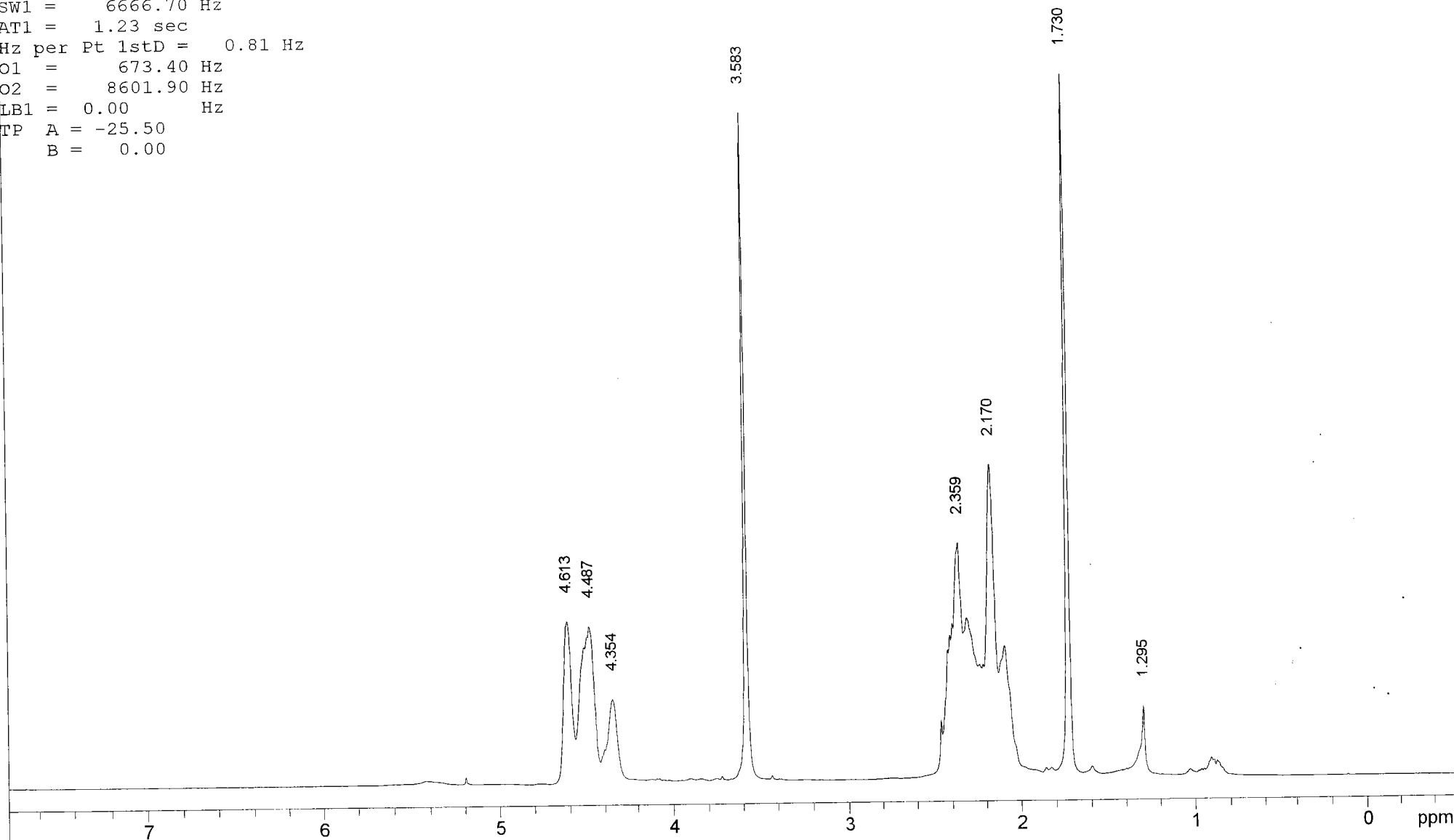


CHART 5 NMR Spectrum

Experiment = zg
Pulse length = 0.00 usec
Recycle delay = 0.00 sec
NA = 64
PTS1d = 8192
F1 = 500.138855 MHz
SW1 = 6666.70 Hz
AT1 = 1.23 sec
Hz per Pt 1stD = 0.81 Hz
O1 = 673.40 Hz
O2 = 8601.90 Hz
LB1 = 0.00 Hz
TP A = -25.50
B = 0.00



Chemir Christmas tree 2005

USER: Santa DATE: Day before Ch

F1: 500.139	SW1: 6667	OF1: 673.4	PTS1d: 8192
EX: zg	PW: 0.0 usec	PD: 0.0 sec	NA: 64
		LB: 0.0	WinNuts - \$xmastree